

Version No.: V-240406



2024

PRODUCT  
CATALOGUE

## 3D DEPTH CAMERA BASED on ToF TECHNOLOGY



**Address:** Building F, Phase II, Qingdao International Innovation Park, No.1  
Keyuan Weiyi Road, Laoshan District, Qingdao City, Shandong Province, China  
**E-mail:** [davions.gao@goermicro.com](mailto:davions.gao@goermicro.com)  
**Tel:** 17685764249 Davions Gao

Goermicro



### About Goermicro

## A Leading Technology Company in MEMS

Goermicro is a semiconductor company that focuses on the R&D, production and sales of MEMS devices and microsystem modules. Our business covers key links in the industry chains such as chip design, product development, packaging testing and system applications. Through vertical integration, we provide accounts with "chips + devices + modules + systems" one-stop solutions.

**400+**

Annual operating income exceeds 400 million USD

**8%**

R&D investment accounts for more than 8% of revenue

**1800+**

The number of granted patents is more than 1800

## Team Development

### MILESTONES

**2017**

Released ToF modules DCAM100 and DCAM710, announced SDK and graphical tools

**2016**

At a well-known VR company worldwide, we began evaluating 3D sensors, eventually selected the ToF sensor and began research and developing

**2019**

Supported over 400 developers, conducted evaluations and development, and completed custom development for over 10 projects

**2020**

Our products began to transform to professional and systematic ones

**2022**

Industrial grade products development completed and put into test in the field

**2023**

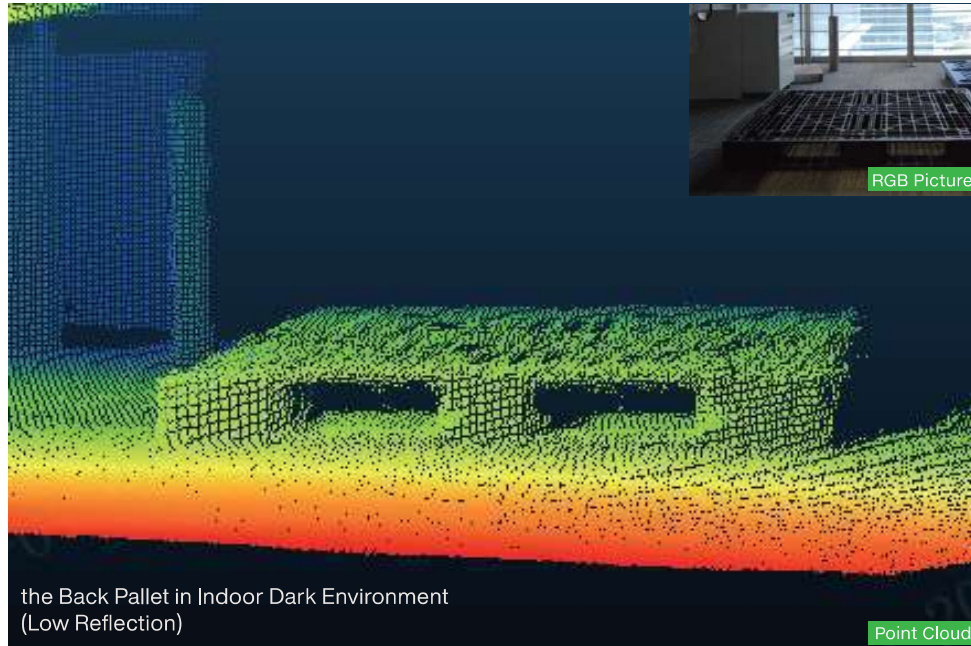
Receiving positive feedback from industrial-oriented customers and realizing revenues

- 7 years R&D experience in TOF Technology
- Over 10 designed independently & mass produced TOF products
- Dozens of TOF technology related patents
- Independently developed TOF products for fast calibration
- Strong TOF module customization ability for quick delivery.



Product Strength

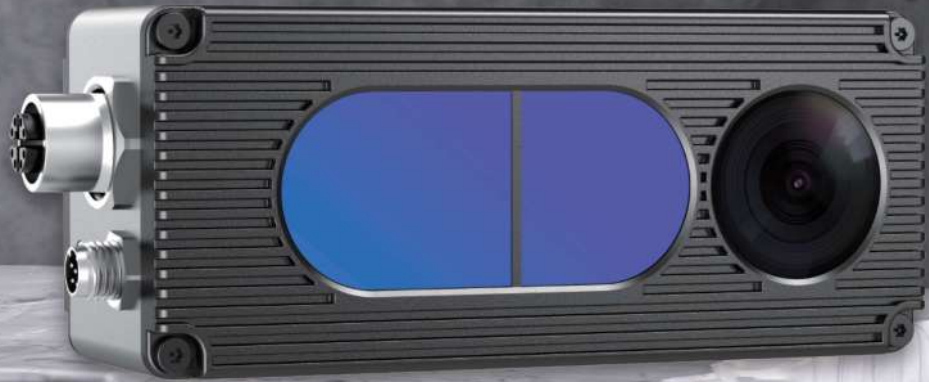
‘Outstanding’,  
anywhere,  
anytime!



‘High Cost Performance’  
from the inside-out



- TOP SENSOR (SONY& NUVOTON)
- TOP ILLUMINATION (LUMENTUM)
- GLOBAL SHUTTER RGB CAMERA
- GaN DRIVED CHIPS
- INDUSTRIAL LENS
- STABLE SDK SUPPORT

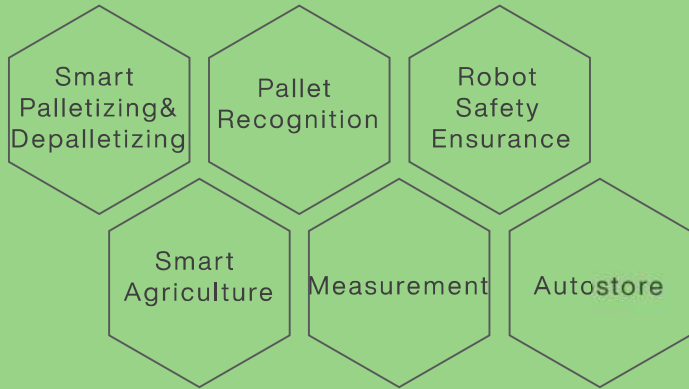


**NYX SERIES**  
Based on Pulse iToF

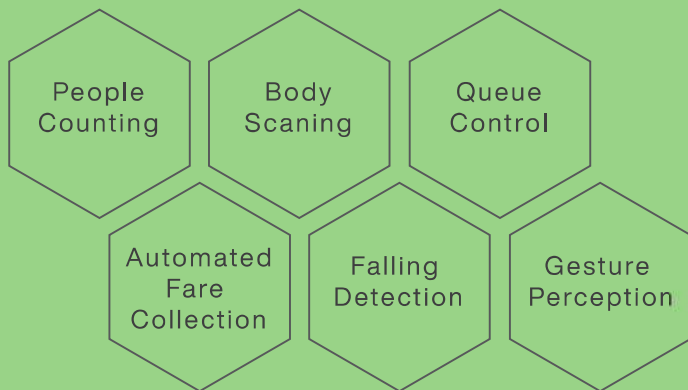


**DS SERIES**  
Based on Continuous Wave iToF

Automation Equipment >>>>



Gesture Perception >>>>





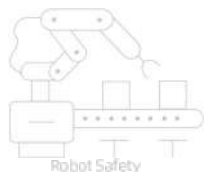
DS 87/86 SERIES



NYX 660/650 SERIES

| Model                       | DS87 Series                                | DS86 Series  |
|-----------------------------|--|--------------|
| Sensor                      | Sony DepthSense ToF CMOS                   |              |
| Illumination                | 940nm VCSEL * 2                            |              |
| ToF Resolution/ Frame rate  | 640*480, Max.15fps                         |              |
| ToF HDR Mode                | Supported with Max. 10fps                  |              |
| ToF FOV                     | 67°(H)*50°(V)                              |              |
| RGB Camera                  | 1600*1200, Global Shutter, 70° (H)*50° (V) |              |
| Output Format               | 16bit (Depth) + 8bit (IR) + JPEG (RGB)     |              |
| Transmission Technology     | 1000Mbps Ethernet                          |              |
| Physical Connection         | Aviation Plug x 2                          | RJ45         |
| Power Supply                | 12V~24V DC or PoE+                         | 12V~24V (DC) |
| Accuracy                    | <1%  |              |
| Working Range               | 0.15m to 5m                                |              |
| Working Temperature         | -20° C to +50° C                           |              |
| Operation System & Platform | Windows/Linux/Arm Linux/ROS1/ROS2          |              |
| SDK                         | C/C++/Python                               |              |
| Enclosure Rating            | IP67                                       | IP42         |
| Conformity                  | CE, FCC, FDA                               |              |

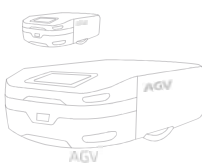
| Model                       | NYX660 Series  | NYX650 Series |
|-----------------------------|--|---------------|
| Sensor                      | Nuvoton Depth Sense ToF CMOS<br>(Originally Panasonic Semiconductor) |               |
| Illumination                | 940nm VCSEL*2  |               |
| ToF Resolution/Frame rate   | 640*480, Max.30fps   |               |
| ToF FOV                     | 70°(H)*50°(V)  |               |
| RGB Camera                  | 1600*1200, Global Shutter, 71° (H)*55° (V)                           |               |
| Output Format               | 16bit (Depth) + 8bit (IR) + JPEG (RGB)                               |               |
| Transmission Technology     | 1000Mbps Ethernet  |               |
| Physical Connection         | Aviation Plug x 2  | RJ45          |
| Power Supply                | 12V~24V DC or PoE+   | 12V~24V (DC)  |
| Accuracy                    | <2%*   |               |
| Working Range               | 0.3m ~ 4.5m*   |               |
| Working Temperature         | -20° C to +50° C   |               |
| Operation System & Platform | Windows7/8/10/11/ Linux/Arm Linux/ROS1/ROS2                          |               |
| SDK                         | C/C++/Python   |               |
| Enclosure Rating            | IP67   | IP42          |
| Conformity                  | CE, FCC, FDA   |               |



Robot Safety



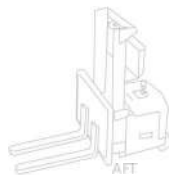
People Counting



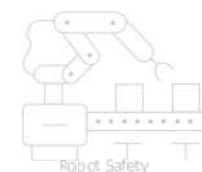
AGV



Measurement



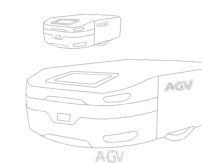
AFT



Robot Safety



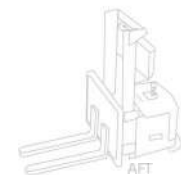
People Counting



AGV



Measurement



AFT